

Gwasanaeth Tân ac Achub
De Cymru



South Wales
Fire and Rescue Service

BE MORE



AR-ALWAD
ON-CALL

FIREFIGHTER
ABILITY ASSESSMENT

This document is also available in Welsh

THE **ABILITY** ASSESSMENT

An On-Call Firefighter has to be able to solve problems and understand information quickly and in pressurised situations.

In your invitation, you will have been advised of the documentation that you need to bring with you to verify your identity and eligibility to work in the UK. The candidate co-ordinator will take this documentation before you commence the process. They will verify the authenticity of the documentation that you bring and make any necessary copies before returning this paperwork to you at the end of the process. Please note that without having sight of this documentation we are legally unable to consider your suitability for employment.

The assessment consists of 26 multiple choice questions split into 7 sections. Some questions are designed to assess your ability to understand and work with numerical information and some questions are designed to assess your ability to understand written information.

Questions to assess numerical understanding require you to undertake; addition, subtraction, multiplication, division and make estimates on numerical data. These questions frequently present information in graphs and tables.

Questions to assess your ability to understand written information including information being presented in a variety of formats; newsletters, training course manual extracts, fire safety information leaflets and publications. You will be asked to demonstrate that you have a clear understanding of the information provided.

You are not permitted to use a calculator or any other source of information to complete the assessment.

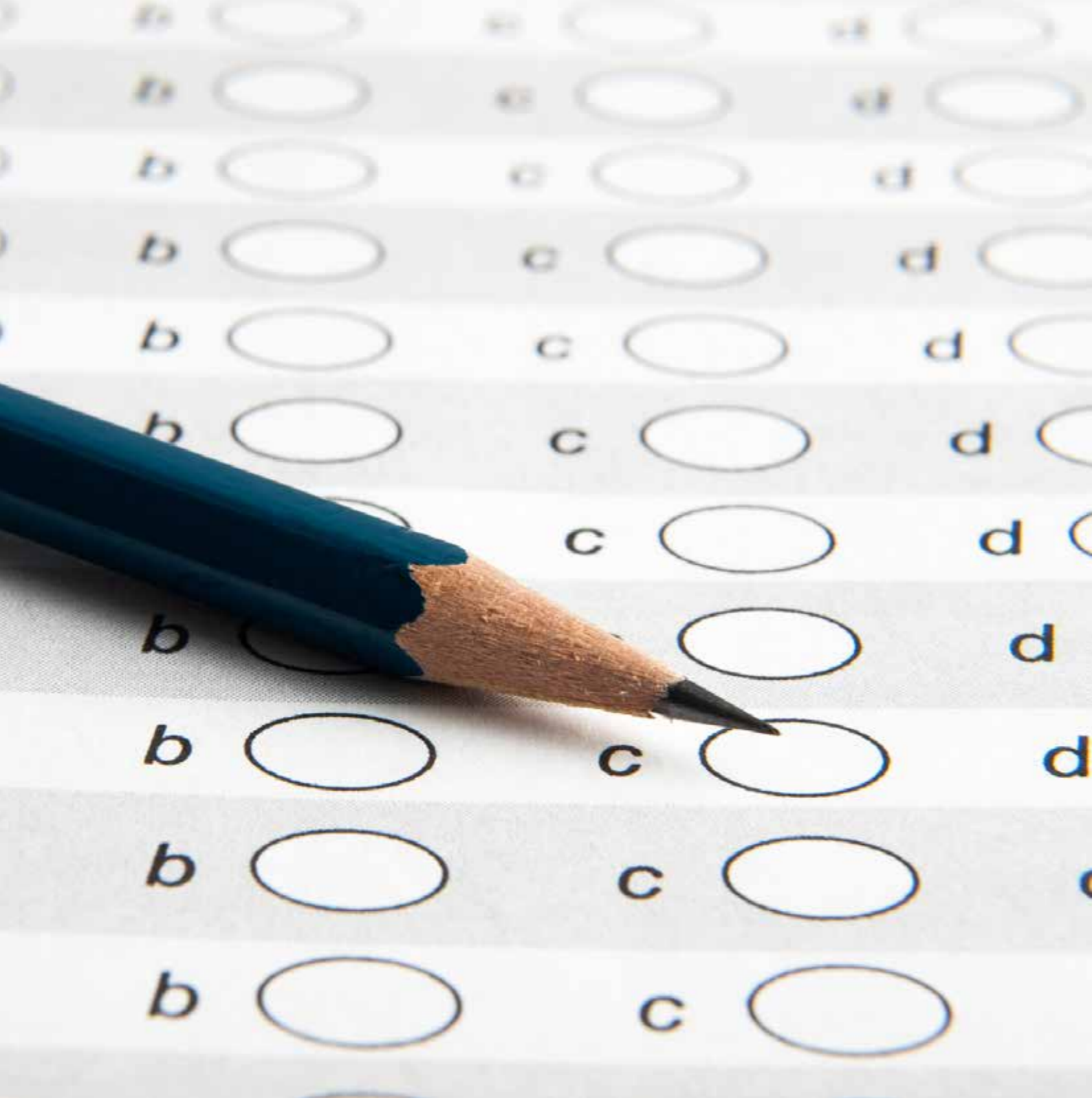
Do not draw on any existing knowledge that you may have of the Fire & Rescue Service or the role of the On-Call Firefighter whilst selecting your answers. You will be assessed solely on how you deal with the information provided. You will have **45 minutes** to complete the **26 questions**.

This booklet contains a number of numerical and written information examples for you to practice.

Answers are provided on page 12.

This booklet has been designed to explain the ability assessment tests that form part of the selection process on becoming an On-Call Firefighter within South Wales Fire and Rescue Service (SWFRS). We are committed to recruiting the best people to work with us and support our communities.

Please invest some time reading this as it has been written to help you practice.



NUMERICAL QUESTIONS

Example 1

A portable dam holds 5,000 litres of water. The hydrant filling the dam supplies 100 litres per minute. How long will it take to completely fill the dam?

- a) 50 minutes
 - b) 40 minutes
 - c) 30 minutes
 - d) 20 minutes
-

Example 2

The 5,000 litre portable dam supplies 2 fire appliances at an incident. If both appliance are delivering water at the same rate and the dam empties in 10 minutes, at what rate is each of the fire appliances delivering water?

- a) 300 litres per minute
 - b) 350 litres per minute
 - c) 200 litres per minute
 - d) 250 litres per minute
-

Example 3

A Breathing Apparatus team enters the risk area at 09:49 hours. They have sufficient air within their cylinders to last 38 minutes. At what time must they exit the risk before they run out of air?

- a) 10:11 hours
- b) 10:23 hours
- c) 10:27 hours
- d) 10:13 hours

NUMERICAL QUESTIONS

THE DETAILS PRESENTED BELOW RELATE TO A FIRE CALL.

Incident Facts

- Flooding incident
- 999 call received at 10:17
- First Pump arrived at the incident at 10:26
- Multiple Vehicles are now in attendance
- Deteriorating weather means that the flood water is rising
- Access to the Flood area is difficult and arduous due to the nature of the terrain and weather conditions

Resources in attendance

	Arrival time at incident
Pump 1	10:26
Pump 2	10:37
Pump 3	10:49
High Volume Pump	11:03
Incident Commander	10:41

Please Note

- Each Pump has a crew of 5 and can pump 250 litres of water per minute
- Each High Volume Pump has a crew of 4 and can pump 2500 litres of water per minute
- The Incident Commander is a senior member of the Fire and Rescue Service who is trained to oversee the management of an incident

NUMERICAL QUESTIONS

Example 4

Due to the arduous conditions, Pump 1 was replaced after four hours. At what time did Pump 1 leave?

- a) 12:46
- b) 14:26
- c) 12:36
- d) 14:24

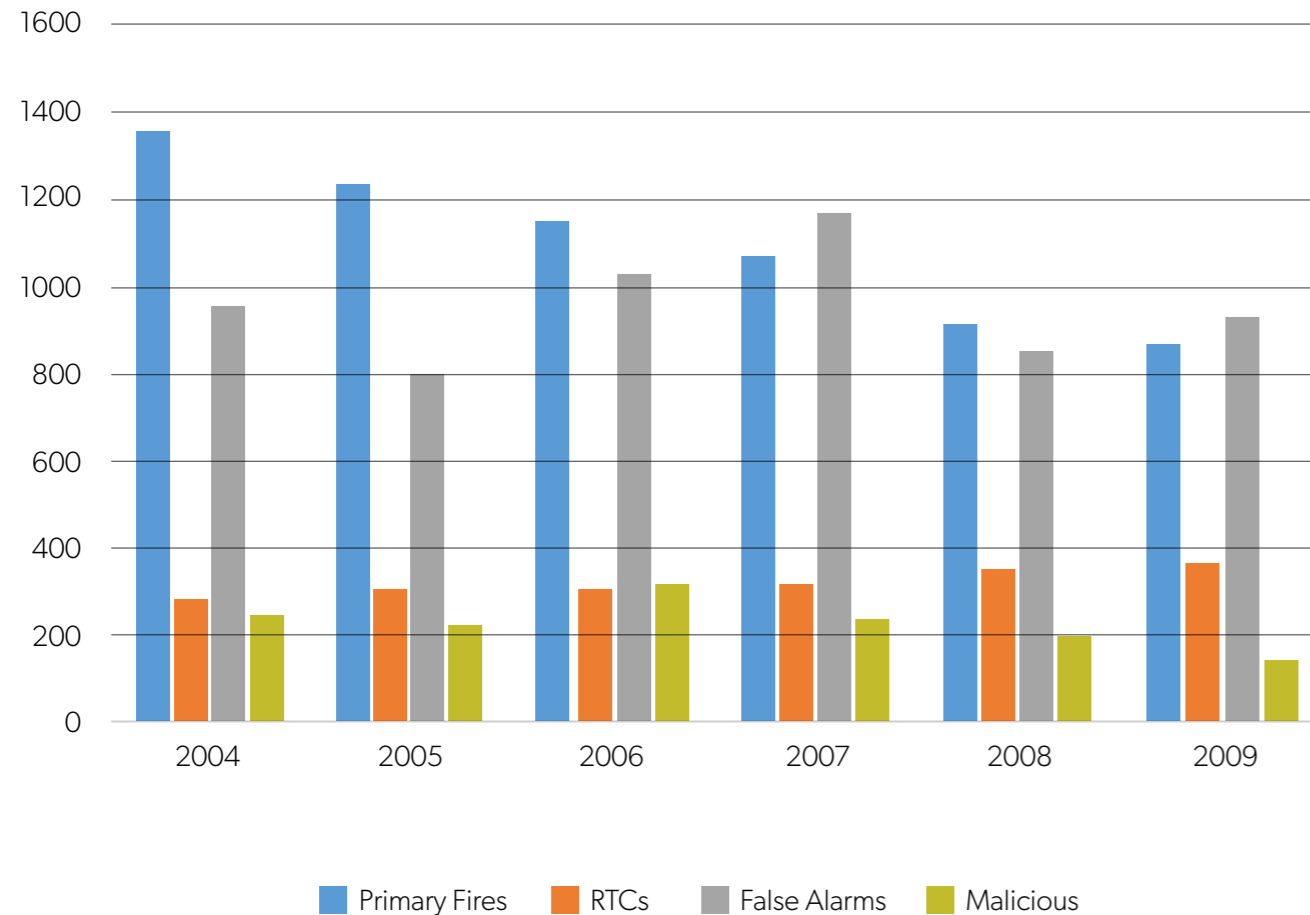
Example 5

Based on the facts provided, how many Fire Service personnel were in attendance at the incident at 11:00?

- a) 16
- b) 25
- c) 19
- d) 20

NUMERICAL QUESTIONS

The table on below page provides key information in relation to the number of incidents that the Fire and Rescue Service has attended in the first quarter in the years 2004 - 2009. Use this information to answer the following questions.



NUMERICAL QUESTIONS

Example 6

Consider the information provided in the Bar Chart. Which one of the following statements is true?

- a) The number of Primary Fires has decreased year on year since 2004 to 2009.
- b) The Fire Service attends more malicious calls than RTC's every year.
- c) The Fire Service attended more Road traffic collisions than False alarms calls over the period 2004 - 2009.
- d) The number of false alarms has decreased every year for the period between 2004 and 2009.

Example 7

Approximately how many more False Alarm calls did the Fire Service attend compared to RTC calls in 2005?

- a) 540 more
- b) 380 more
- c) 580 more
- d) 490 more

WRITTEN INFORMATION

Arson Vulnerability Assessments

Empty Properties

These can be either crown, private or local authority owned properties lying empty for periods of time awaiting occupation. These vacant properties provide a target for illegal activities and trespassing. Although empty often many of these properties are in a neglected state and have a damaging effect in the areas in which they are located. These properties should be cleared of all dangerous and hazardous items. E.g. LPG cylinders and chemicals. A risk assessment should be carried out by the owner/property manager as the premises will still be visited by others such as sales teams or contractors etc. Fire Service personnel will submit an arson vulnerability assessment following a fire at the site or during a routine survey of an area where they identify issues that will effect firefighting safety and this information will be forwarded to Fire Safety and Fire Control.

Open and Derelict Properties

Open and Derelict properties are being targeted for metal and building material theft as well as anti-social behaviour and other associated illegal activities.

Arson vulnerability assessments are carried out to ascertain dangers to fire crews attending the site. The local authority planning and building control departments are contacted to confirm ownership and to arrange securing of the property and removal of any dangerous or hazardous items.

Information regarding the property is taken such as key holder, contact number, security in place, and dangers to fire crews such as open pits, LPG cylinders (contacting owner to arrange removal from site) Chemicals etc. and forwarded to Fire Control to inform fire crews.

What are we doing about it?

If there are any public health issues we liaise with environmental health to ensure the appropriate action is taken. We confirm ownership through Local Authority records, tracing the owner. We provide information to assist and communicate with other organisations such as:

- Local Authority departments, Protection, Planning, Building control waste management, Environment etc
- National Resources Wales (NRW)
- HSE
- Waste Management departments
- Police

SWFRS are supporting Local Authority and Police operations to reduce the number of FDR1 and FDR3 fires attended at targeted locations.

WRITTEN INFORMATION

Example 8

According to the article, which of the following statements is true?

- a) If there are any Health issues we liaise with the NHS
- b) SWFRS are supporting Local Authority and Police operations to increase the number of FDR1 and FDR3 fires attended at targeted locations
- c) Open and Derelict properties are being targeted for metal and building material theft
- d) We confirm ownership through estate agents records

Example 9

Which one of the following statements is false?

We provide information to assist and communicate with other organisations such as:

- a) HSE
- b) Police
- c) Waste Management departments
- d) Environment Agency

Example 10

According to the article, which of the following statements is false?

Information regarding the property is taken such as:

- a) Key holder
- b) Opening times
- c) Security
- d) Contact number

EXAMPLE ANSWERS

	Answer
Example 1	A
Example 2	D
Example 3	C
Example 4	B
Example 5	A
Example 6	A
Example 7	D
Example 8	C
Example 9	D
Example 10	B

NOTES

.....

.....

.....

.....

.....

.....

.....

.....

.....

.....

.....

.....

.....

.....

.....

.....

.....

.....

.....

.....



South Wales Fire and Rescue Service

Recruitment and Assessment Team
Fire Service Headquarters
Forest View Business Park
Llantrisant
CF72 8LX

Recruitment Line - 01443 232200
recruitment1@southwales-fire.gov.uk



@SWFRS_Careers



South Wales Fire and Rescue Service

www.southwales-fire.gov.uk