

**South Wales**  
Fire and Rescue Service



Gwasanaeth Tân ac Achub  
**De Cymru**

# Performance Monitoring Report 2014/2015

April 2014 to December 2014

## Introduction

This is the Quarter 3 (Q3) Performance Monitoring Report for 2014/15 and it highlights Q3 performance for the period April 2014 to December 2014. The report includes:

- Incidents of interest
- Analysis of incident activity levels by Unitary Authority Area (UAA).
  - Details the number of incidents that SWFRS have attended in each UAA.  
(Identifies the types of incidents that SWFRS have been attending in each UAA.)
- Performance Indicators
  - Indicators of particular interest.  
(These are the indicators that although not specified as Strategic Indicators by the Welsh Government are of particular interest to the Fire and Rescue Authority and SWFRS.)
  - Strategic Indicators

The performance indicators that are included in the appendices of this report show five years of data to enable us to demonstrate how the organisation is performing for the communities it serves by showing long term trends in performance.

Following consideration by the Senior Management Team and the Fire and Rescue Authority, the report is made available to the public via the internet.

The Service Performance & Communications department co-ordinates and compiles this report on behalf of the Corporate Support Directorate . All information is extracted from updated Directorate quarterly Service Plans and the data sets are maintained and validated by the Statistics and Risk team.

We are continually seeking to improve this report and would welcome comments on additional information or other changes that you would like to see included in the future. Please feel free to contact Wayne Thomas on 01443 232780 or Dai Morris on 01443 232451 with these comments.

## **Incidents of Interest: October 2014 to December 2014**

**02<sup>nd</sup> October 2014 12:03**

**Atlantic trading estate, Barry**

Crews from Barry, Penarth and Ely were called to a fire at a scrap yard in Barry. The fire, which was found to be accidental, took hold in a stack of cars and spread through more than 20 vehicles. Crews used two ground monitors, four jets and three hose reel jets to battle the blaze over a two hour period.

**02<sup>nd</sup> October 2014 19:56**

**Ynyshir, Porth**

A crew from Porth fire station was called out to an incident where a marmoset monkey found itself trapped between a wall and a shed. The crew assisted with the rescue of the animal for around two hours, but had to leave without rescuing the monkey because it kept running back to a confined space. The incident was left in the hands of the RSPCA.

**08<sup>th</sup> October 2014 11:12**

**Langstone Road, Newport**

A woman was airlifted to hospital when a car and an army lorry collided, before ploughing into a house. The collision involved a Honda Jazz and an army lorry and resulted in the car causing structural damage to the two-storey property. The occupants of the property were not at home at the time of the crash but a 75-year-old woman, who was driving the car, was injured as her car became lodged between the army lorry and the front of the property. The 12 soldiers who had been returning from a training exercise rushed to the woman's aid before firefighters arrived at the scene and cut her from the vehicle. She was assisted by paramedics and taken by air ambulance to the University Hospital of Wales in Cardiff. Her condition was described as stable and non life threatening.

**24<sup>th</sup> November 2014 07:14**

**Tylerstown, Rhondda**

Crews from Ferndale, Tonypany and Pontypridd were called to an incident where a car had plunged 20ft down a mountainside in Rhondda Cynon Taf. Rope lines and a stretcher were used to rescue the man from the vehicle before he was left in the hands of paramedics. The casualty is believed to have non-life threatening injuries after he was taken to the Royal Glamorgan Hospital in Llantrisant with injuries, which included a broken arm.

**25<sup>th</sup> November 2014 21:08**

**Van Road, Caerphilly**

Two people were taken to hospital after a kitchen fire at a house fire in Caerphilly. The blaze was well alight when fire crews from Caerphilly and Whitchurch arrived at the scene. Crews extinguished the blaze using two hose reel jets, four sets of breathing apparatus and a thermal imaging camera. One person was rescued from the house and the second was found at the back of the property. They were given first aid at the scene before both casualties were taken to Cardiff's University Hospital of Wales.

**08<sup>th</sup> December 2014 08:11**  
**St Mellons, Cardiff**

Crews from Caerphilly, Malpas, Whitchurch and Roath attended a fire which started as a result of a road traffic collision between a bus and a car. Approximately 40 children were taken from the bus prior to the crews' arrival, while five children and the bus driver were treated at the scene by paramedics and taken to hospital for precautionary checks. The driver of the car, who was sadly confirmed as a fatality, was extricated from the car using hydraulic equipment.

**10<sup>th</sup> December 2014 15:10**  
**Garth, Maesteg**

A crew from Maesteg was called to a road traffic collision involving a minibus and a pedestrian. The crew released the casualty from under the minibus before using Oxygen, an OP Airway and a defibrillator in an attempt to resuscitate him. Sadly, the crews were unable to do this and the casualty was confirmed dead at the scene.

**30<sup>th</sup> December 2014 12:38**  
**Ogmore Vale**

Crews from Bridgend and Ogmore Vale were called to an incident where a four year old cocker spaniel had fallen in to a quarry. Crews used a triple extension ladder, a thermal imaging camera and a dog-restraining device to rescue the dog that was unharmed.

\*\*\*NOTE - Further information regarding these incidents of interest can be found in the monthly SWFRS Newsletters, which are available on the intranet .

Incident Categories	2013/2014	Apr	May	Jun	Jul	Aug	Sep	Oct	Nov	Dec	Jan	Feb	Mar	Year Total	Q1	Q2	Q3	Q4	Q3 - 13/14 vs 14/15
<b>Total Incidents</b>	1083	138	89	111	122	86	106	76	98	57				883	338	314	231		+ 31
<b>Special Service Calls (SSC)</b>	148	9	6	8	10	7	15	14	15	10				94	23	32	39		0
SSC - Road Traffic Collisions	48	3	0	1	3	0	8	6	5	2				28	4	11	13		+ 3
SSC - Other	100	6	6	7	7	7	7	8	10	8				66	19	21	26		- 3
<b>False Alarms</b>	403	36	33	45	32	37	29	34	41	23				310	114	98	98		+ 16
Malicious False Alarms	19	5	3	4	2	4	1	1	5	1				26	12	7	7		0
Good Intent False Alarms	207	25	15	21	19	15	11	12	8	3				129	61	45	23		- 14
Automatic Fire Alarms	177	6	15	20	11	18	17	21	28	19				155	41	46	68		+ 30
<b>Fires</b>	532	93	50	58	80	42	62	28	42	24				479	201	184	94		+ 15
Deliberate Fires	455	84	38	51	73	33	49	22	35	19				404	173	155	76		+ 17
Accidental Fires	77	9	12	7	7	9	13	6	7	5				75	28	29	18		- 2
Accidental Dwelling Fires	27	2	4	2	2	4	6	1	1	1				23	8	12	3		- 3
% Dwelling Fires - No Alarm Fitted	41%	0%	75%	50%	100%	50%	33%	100%	0%	100%				48%	44%	50%	50%		- 13%
Attacks on Fire Crews	1	1	0	0	0	0	0	0	0	0				1	1	0	0		0

**Notes**

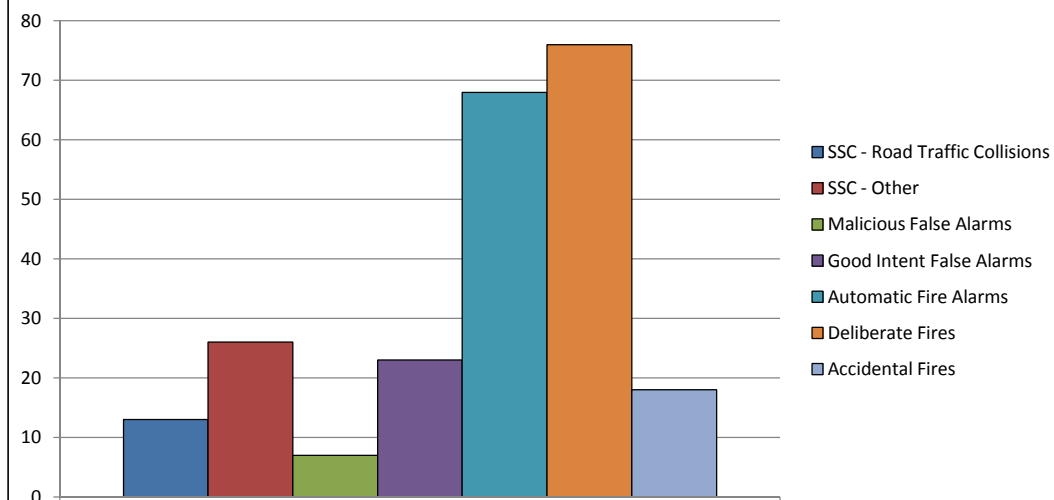
The total number of incidents attended in Q3 of 2014/15 is 31 (15.5%) higher than that attended in Q3 of 2013/14.

The number of Road Traffic Collisions attended during Q3 of 2014/15 was 3 (+30%) higher than that attended during Q3 of 2013/14.

The number of false alarms attended in Q3 of 2014/15 was 16 (+19.5%) higher than the number attended in Q3 of 2013/14. This increase is mainly due to 30 (+78.9%) more automatic false alarms being attended this quarter compared to the corresponding quarter of last year.

The number of accidental dwelling fires attended this quarter decreased by 3 (-50%) compared to the same quarter of last year.

**Quarter 3 - 2014/2015**



Incident Categories	2013/2014	Apr	May	Jun	Jul	Aug	Sep	Oct	Nov	Dec	Jan	Feb	Mar	Year Total	Q1	Q2	Q3	Q4	Q3 - 13/14 vs 14/15
<b>Total Incidents</b>	1610	133	119	109	129	115	152	109	92	104				1062	361	396	305		- 42
<b>Special Service Calls (SSC)</b>	307	12	32	18	25	31	27	32	25	25				227	62	83	82		+ 5
SSC - Road Traffic Collisions	127	3	15	9	6	11	13	16	8	12				93	27	30	36		+ 5
SSC - Other	180	9	17	9	19	20	14	16	17	13				134	35	53	46		0
<b>False Alarms</b>	714	60	48	42	62	56	75	50	42	56				491	150	193	148		- 36
Malicious False Alarms	30	1	3	3	1	0	1	1	0	0				10	7	2	1		- 3
Good Intent False Alarms	275	20	19	15	27	18	21	18	17	16				171	54	66	51		- 16
Automatic Fire Alarms	409	39	26	24	34	38	53	31	25	40				310	89	125	96		- 17
<b>Fires</b>	589	61	39	49	42	28	50	27	25	23				344	149	120	75		- 11
Deliberate Fires	406	47	22	32	30	14	39	12	16	10				222	101	83	38		- 11
Accidental Fires	183	14	17	17	12	14	11	15	9	13				122	48	37	37		0
Accidental Dwelling Fires	69	2	5	7	1	9	6	7	4	3				44	14	16	14		- 6
% Dwelling Fires - No Alarm Fitted	43%	100%	60%	14%	0%	44%	43%	43%	0%	0%				36%	43%	41%	21%		- 19%
Attacks on Fire Crews	1	0	0	0	0	1	0	0	0	0				1	0	1	0		0

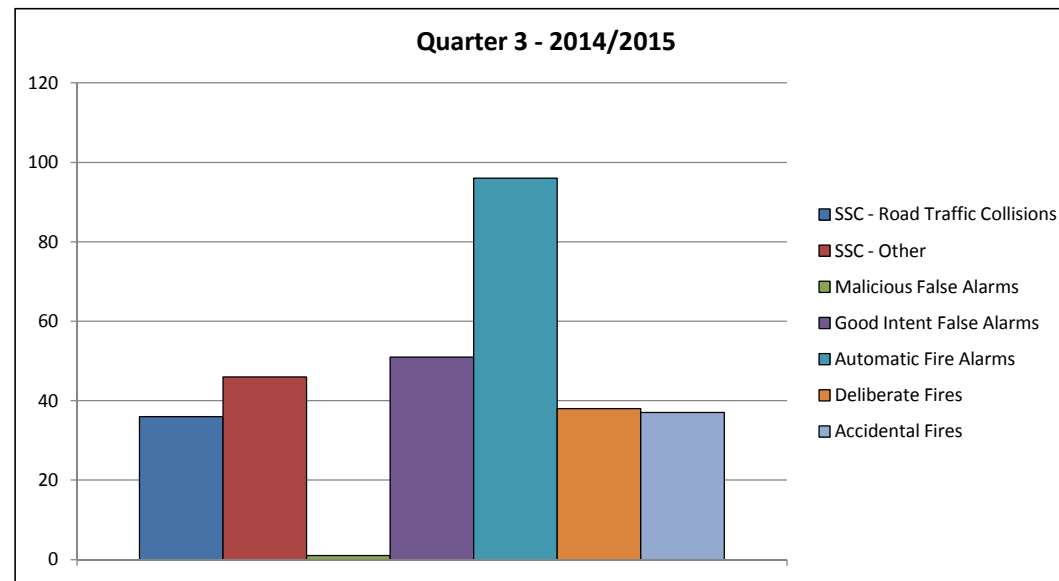
**Notes**

The total number of incidents attended in Q3 of 2014/15 is 42 (-12.1%) lower than that attended in Q3 of 2013/14.

The number of false alarms attended in Q3 of 2014/15 is 36 (-19.6%) lower than during the previous year. This is as a result of 16 (-23.9%) less good intent false alarms, 17 (-15.0%) less automatic fire alarms and 3 (-75.0%) less malicious false alarms.

The % of dwelling fires attended where no smoke alarm was fitted has fallen from 40.9% for Q3 last year (9 dwelling fires from 22) to 21.4% during Q3 of this year (3 dwelling fires from 14).

The number of fires attended during Q3 this year is 11 (-12.8%) lower than that attended during Q3 of the previous year. This is due to a reduction in the number of deliberate fires, which reduced by 11 incidents (-22.4%) compared to the same quarter of last year.



Incident Categories	2013/2014	Apr	May	Jun	Jul	Aug	Sep	Oct	Nov	Dec	Jan	Feb	Mar	Year Total	Q1	Q2	Q3	Q4	Q3 - 13/14 vs 14/15
<b>Total Incidents</b>	2004	176	163	181	177	121	171	145	129	119				1382	520	469	393		+ 11
<b>Special Service Calls (SSC)</b>	351	27	37	30	28	32	24	29	22	36				265	94	84	87		+ 6
SSC - Road Traffic Collisions	127	10	13	13	12	13	9	14	3	20				107	36	34	37		+ 5
SSC - Other	224	17	24	17	16	19	15	15	19	16				158	58	50	50		+ 1
<b>False Alarms</b>	718	61	50	66	79	40	71	63	56	44				530	177	190	163		+ 13
Malicious False Alarms	80	6	4	2	6	1	13	9	3	0				44	12	20	12		- 2
Good Intent False Alarms	321	31	23	36	37	16	28	17	26	18				232	90	81	61		+ 5
Automatic Fire Alarms	317	24	23	28	36	23	30	37	27	26				254	75	89	90		+ 10
<b>Fires</b>	935	88	76	85	70	49	76	53	51	39				587	249	195	143		- 8
Deliberate Fires	757	74	62	70	48	38	60	35	30	22				439	206	146	87		- 24
Accidental Fires	178	14	14	15	22	11	16	18	21	17				148	43	49	56		+ 16
Accidental Dwelling Fires	63	3	6	3	6	1	4	10	11	6				50	12	11	27		+ 9
% Dwelling Fires - No Alarm Fitted	55%	60%	25%	67%	56%	50%	20%	18%	36%	75%				43%	47%	44%	40%		- 15%
Attacks on Fire Crews	2	0	0	0	0	0	0	0	0	0				0	0	0	0		- 1

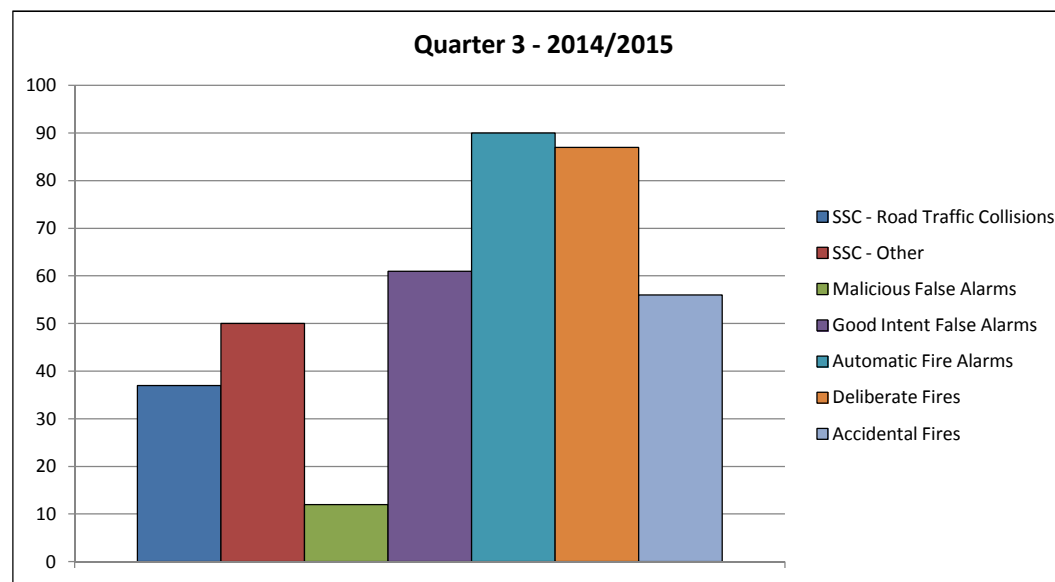
**Notes**

The total number of incidents attended in Q3 of 2014/15 is 11 (+2.7%) higher than that attended in Q3 of 2013/14.

The number of SSCs attended during Q3 of this year is 6 (+7.4%) higher than the number attended during the previous quarter. This is mainly due to an increase in the number of Road Traffic Collisions attended this quarter compared to the previous quarter, which saw an increase of 5 (+15.6%).

The number of deliberate fires attended in Q3 of 2014/15 decreased by 24 (-21.6%) compared to the same quarter last year. The number of accidental fires however has increased by 16 (+40.0%) during the same period.

The number of accidental dwelling fires attended in Q3 of 2014/15 was 9 (+50.0%) higher than during Q3 of the previous year.



Incident Categories	2013/2014	Apr	May	Jun	Jul	Aug	Sep	Oct	Nov	Dec	Jan	Feb	Mar	Year Total	Q1	Q2	Q3	Q4	Q3 - 13/14 vs 14/15
<b>Total Incidents</b>	4093	302	300	340	412	337	365	362	322	304				3044	942	1114	988		- 13
<b>Special Service Calls (SSC)</b>	802	46	59	67	50	77	61	66	67	75				568	172	188	208		- 1
SSC - Road Traffic Collisions	252	11	12	21	14	21	18	26	24	26				173	44	53	76		+ 4
SSC - Other	550	35	47	46	36	56	43	40	43	49				395	128	135	132		- 5
<b>False Alarms</b>	2147	168	170	152	212	184	204	209	194	171				1664	490	600	574		- 23
Malicious False Alarms	113	5	6	10	11	12	12	18	13	13				100	21	35	44		+ 21
Good Intent False Alarms	534	53	46	43	60	44	71	45	46	41				449	142	175	132		+ 1
Automatic Fire Alarms	1500	110	118	99	141	128	121	145	135	117				1114	327	390	397		- 46
<b>Fires</b>	1144	88	71	121	150	76	100	87	61	58				812	280	326	206		+ 11
Deliberate Fires	725	59	37	82	86	50	75	58	34	31				512	178	211	123		+ 17
Accidental Fires	419	29	34	39	64	26	25	29	27	27				300	102	115	83		- 6
Accidental Dwelling Fires	171	15	15	14	25	13	10	15	8	12				127	44	48	35		- 6
% Dwelling Fires - No Alarm Fitted	20%	25%	44%	7%	31%	23%	36%	29%	40%	43%				31%	27%	30%	37%		+ 18%
Attacks on Fire Crews	3	0	0	1	2	1	0	1	1	1				7	1	3	3		+ 2

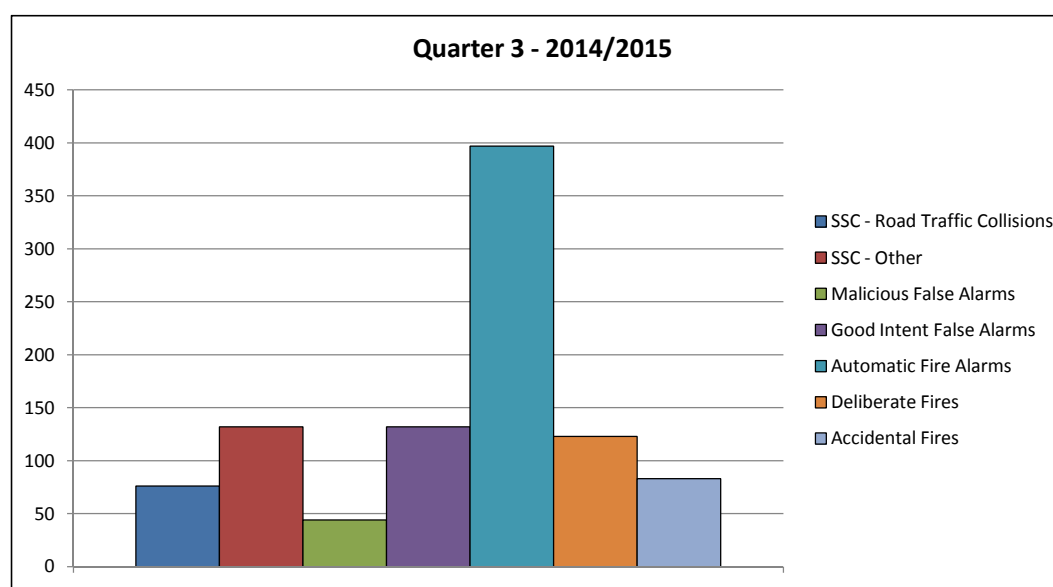
**Notes**

The total number of incidents attended during Q3 of 2014/15 is 13 (-1.3%) lower than that attended during the same quarter of the previous year.

The number of Automatic Fire Alarms attended during Q3 of 2014/15 is 46 (-10.4%) lower than that attended during Q3 of 2013/14. There has however been an increase in Malicious False Alarms attended during the same period (21 more incidents (+91.3%)).

The number of deliberate fires attended in Q3 of 2014/15 was 17 (+16.0%) higher than during Q3 of the previous year.

There were 3 attacks on crews during Q3 of 2014/15 compared to 1 during Q3 of the previous year (+200%). There have already been 7 attacks on crews in Cardiff this year. There have been 14 attacks on crews in South Wales this year to date, meaning that half of all attacks on crews in South Wales occurred in Cardiff.





# Merthyr Tydfil County Borough Council

## Performance Monitoring Report 2014/2015

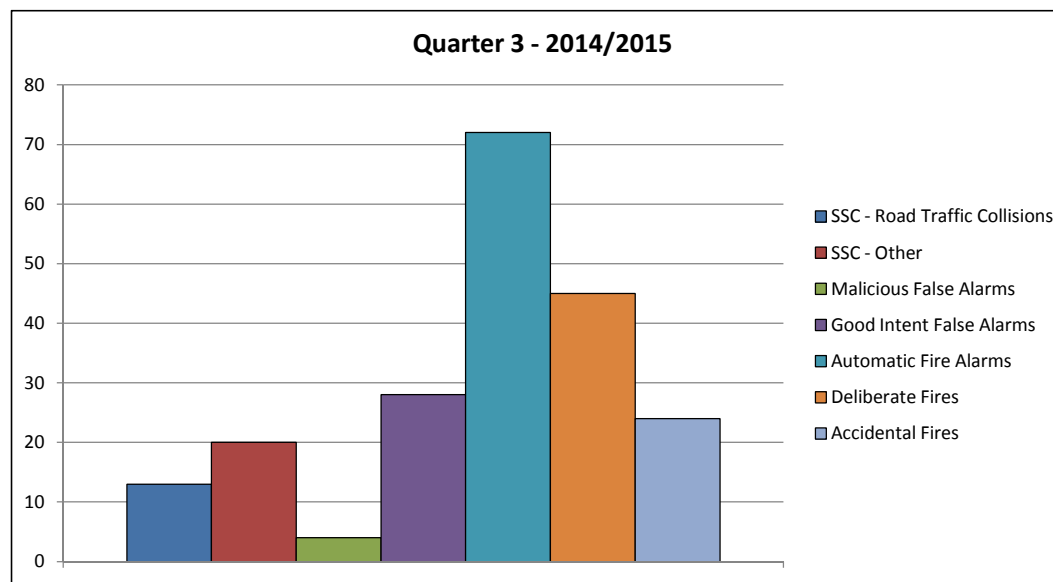
Incident Categories	2013/2014	Apr	May	Jun	Jul	Aug	Sep	Oct	Nov	Dec	Jan	Feb	Mar	Year Total	Q1	Q2	Q3	Q4	Q3 - 13/14 vs 14/15
<b>Total Incidents</b>	1011	125	73	91	78	83	72	70	84	52				728	289	233	206		+ 4
<b>Special Service Calls (SSC)</b>	162	16	11	15	17	21	6	12	12	9				119	42	44	33		- 10
SSC - Road Traffic Collisions	50	8	2	5	10	11	2	5	2	6				51	15	23	13		- 3
SSC - Other	112	8	9	10	7	10	4	7	10	3				68	27	21	20		- 7
<b>False Alarms</b>	401	48	32	34	29	41	37	35	45	24				325	114	107	104		+ 11
Malicious False Alarms	21	3	1	0	2	2	0	0	4	0				12	4	4	4		0
Good Intent False Alarms	139	20	12	13	14	9	14	11	13	4				110	45	37	28		+ 8
Automatic Fire Alarms	241	25	19	21	13	30	23	24	28	20				203	65	66	72		+ 3
<b>Fires</b>	448	61	30	42	32	21	29	23	27	19				284	133	82	69		+ 3
Deliberate Fires	375	57	23	34	26	14	24	14	20	11				223	114	64	45		0
Accidental Fires	73	4	7	8	6	7	5	9	7	8				61	19	18	24		+ 3
Accidental Dwelling Fires	33	1	3	2	1	2	2	3	4	2				20	6	5	9		- 1
% Dwelling Fires - No Alarm Fitted	32%	33%	67%	100%	0%	0%	100%	0%	60%	0%				44%	67%	33%	30%		- 20%
Attacks on Fire Crews	1	0	0	1	0	0	0	0	0	0				1	1	0	0		0

**Notes**

The number of Special Service Calls attended in Q3 of 2014/15 has decreased by 10 (-23.6%) compared to the same quarter last year. The number of Road Traffic Collisions have decreased by 3 (-18.8%) compared to the same quarter last year.

The % of dwelling fires attended where no smoke alarm was fitted in Merthyr during Q3 of 2014/15 was 30% (3 dwelling fires from 10 were without smoke alarms). This is considerably lower than the 50% witnessed during the same period last year (5 dwelling fires from 10).

False alarm calls to automatic fire alarms make up almost 35% of the total number of incidents attended in Merthyr Tydfil during the third quarter of 2014/15 (72 of 206 incidents).



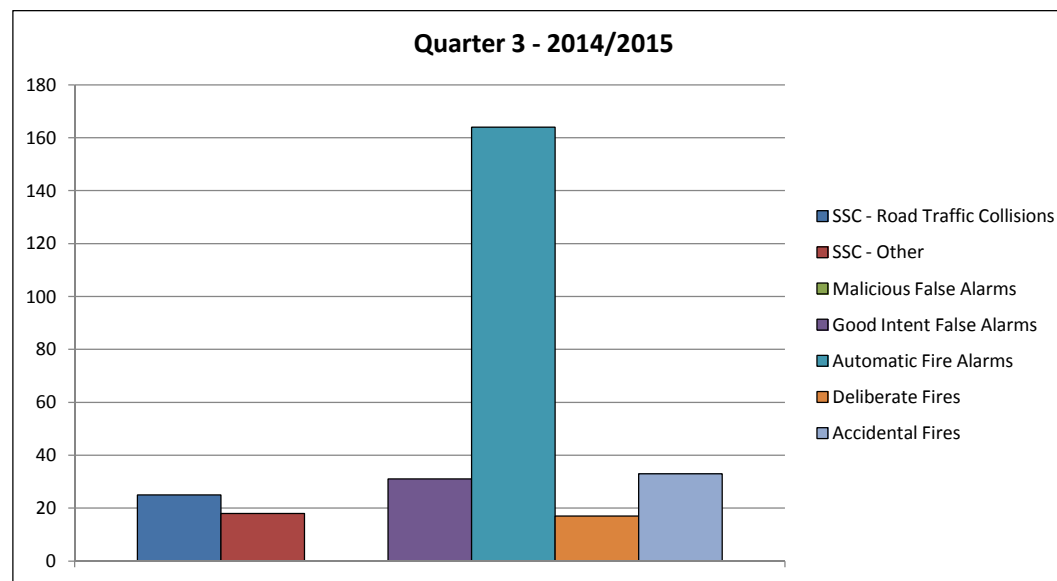
Incident Categories	2013/2014	Apr	May	Jun	Jul	Aug	Sep	Oct	Nov	Dec	Jan	Feb	Mar	Year Total	Q1	Q2	Q3	Q4	Q3 - 13/14 vs 14/15
<b>Total Incidents</b>	1042	68	62	87	114	95	117	110	94	84				831	217	326	288		+ 41
<b>Special Service Calls (SSC)</b>	277	9	17	20	22	17	16	16	15	12				144	46	55	43		- 29
SSC - Road Traffic Collisions	139	3	11	13	9	7	7	10	7	8				75	27	23	25		- 13
SSC - Other	138	6	6	7	13	10	9	6	8	4				69	19	32	18		- 16
<b>False Alarms</b>	516	41	30	47	64	58	89	75	65	55				524	118	211	195		+ 70
Malicious False Alarms	8	0	0	0	0	0	0	0	0	0				0	0	0			- 1
Good Intent False Alarms	110	10	1	10	12	10	18	15	7	9				92	21	40	31		+ 6
Automatic Fire Alarms	398	31	29	37	52	48	71	60	58	46				432	97	171	164		+ 65
<b>Fires</b>	249	18	15	20	28	20	12	19	14	17				163	53	60	50		0
Deliberate Fires	101	4	7	8	13	6	6	9	5	3				61	19	25	17		+ 2
Accidental Fires	148	14	8	12	15	14	6	10	9	14				102	34	35	33		- 2
Accidental Dwelling Fires	37	5	3	1	5	4	1	2	3	3				27	9	10	8		+ 3
% Dwelling Fires - No Alarm Fitted	27%	40%	0%	100%	60%	0%	100%	0%	33%	33%				36%	40%	40%	25%		+ 5%
Attacks on Fire Crews	3	0	0	0	0	0	0	0	0	0				0	0	0			- 2

**Notes**

False alarm calls to automatic fire alarms make up 56.9% of the total number of incidents attended in Monmouthshire during the third quarter. The number of automatic fire alarm calls attended this quarter is 65 (+65.7%) higher than attended during the same quarter last year. This information has been passed to the Fire Safety Department who are investigating.

The number of Special Service Calls attended in Q3 of 2014/15 is 29 (-40.3%) lower than during the previous year. This decrease is a result of 13 (-34.2%) less malicious false alarms, 19 (-30.6%) less good intent false alarms and 22 (-18.5%) less automatic fire alarms.

The number of Accidental Dwelling Fires in Monmouthshire during Q3 has increased by 3 (+60.0%) compared to the same quarter last year.



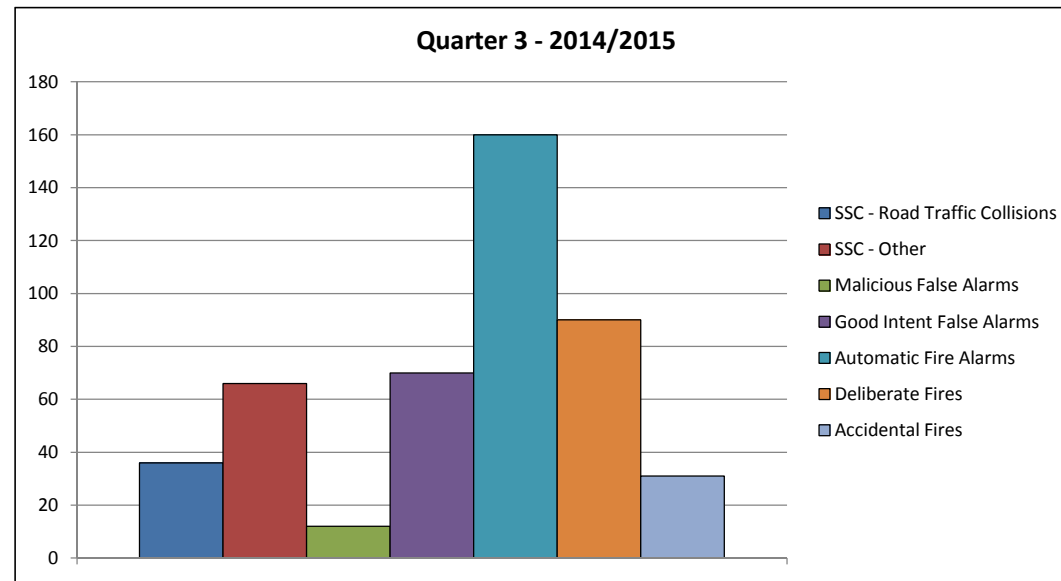
Incident Categories	2013/2014	Apr	May	Jun	Jul	Aug	Sep	Oct	Nov	Dec	Jan	Feb	Mar	Year Total	Q1	Q2	Q3	Q4	Q3 - 13/14 vs 14/15
<b>Total Incidents</b>	2178	169	170	183	233	192	221	164	166	135				1633	522	646	465		- 52
<b>Special Service Calls (SSC)</b>	426	31	41	34	29	41	26	33	35	34				304	106	96	102		- 11
SSC - Road Traffic Collisions	156	10	16	13	7	15	8	15	14	7				105	39	30	36		+ 8
SSC - Other	270	21	25	21	22	26	18	18	21	27				199	67	66	66		- 19
<b>False Alarms</b>	995	82	67	66	116	76	99	88	86	68				748	215	291	242		- 33
Malicious False Alarms	60	6	6	4	6	1	12	5	5	2				47	16	19	12		- 5
Good Intent False Alarms	301	26	23	24	42	21	31	28	24	18				237	73	94	70		+ 6
Automatic Fire Alarms	634	50	38	38	68	54	56	55	57	48				464	126	178	160		- 34
<b>Fires</b>	757	56	62	83	88	75	96	43	45	33				581	201	259	121		- 8
Deliberate Fires	565	43	55	70	66	59	72	35	34	21				455	168	197	90		- 4
Accidental Fires	192	13	7	13	22	16	24	8	11	12				126	33	62	31		- 4
Accidental Dwelling Fires	71	4	2	4	10	7	7	2	6	6				48	10	24	14		+ 1
% Dwelling Fires - No Alarm Fitted	41%	25%	60%	60%	50%	22%	44%	50%	38%	50%				43%	50%	39%	44%		- 12%
Attacks on Fire Crews	0	0	0	0	0	0	0	0	0	0				0	0	0	0		0

**Notes**

The total number of incidents attended in Q3 of 2014/15 was 52 (-10.1%) lower than during Q3 of the previous year.

The number of Automatic Fire Alarms attended during quarter 3 has decreased by 34 (-17.5%) compared to the same quarter last year.

The total number of Special Service calls has decreased by 11 (-19.7%) compared to the same quarter last year despite there being an increase of 8 (+28.6%) Road Traffic Collisions when comparing the same time periods. The number of other special service calls attended decreased by 19 (-22.4%).



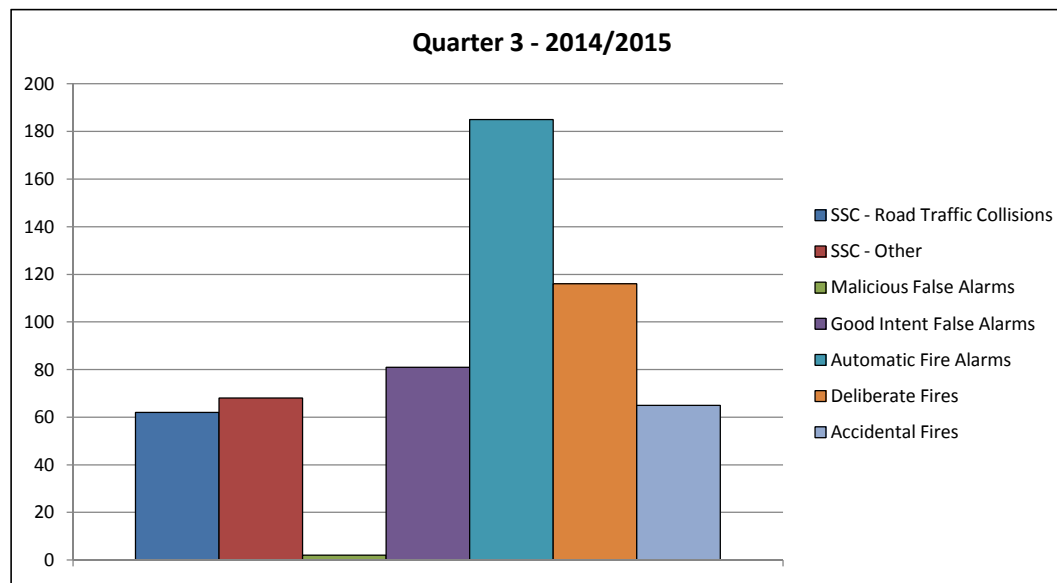
Incident Categories	2013/2014	Apr	May	Jun	Jul	Aug	Sep	Oct	Nov	Dec	Jan	Feb	Mar	Year Total	Q1	Q2	Q3	Q4	Q3 - 13/14 vs 14/15
<b>Total Incidents</b>	2866	332	210	237	267	188	245	210	184	185				2058	779	700	579		+ 20
<b>Special Service Calls (SSC)</b>	537	45	40	48	43	47	43	44	46	40				396	133	133	130		- 37
SSC - Road Traffic Collisions	241	22	16	22	17	16	18	20	24	18				173	60	51	62		- 15
SSC - Other	296	23	24	26	26	31	25	24	22	22				223	73	82	68		- 22
<b>False Alarms</b>	984	104	84	92	93	94	100	112	66	90				835	280	287	268		+ 48
Malicious False Alarms	39	4	4	4	5	3	3	0	1	1				25	12	11	2		- 5
Good Intent False Alarms	406	59	42	41	42	38	36	34	22	25				339	142	116	81		+ 9
Automatic Fire Alarms	539	41	38	47	46	53	61	78	43	64				471	126	160	185		+ 44
<b>Fires</b>	1345	183	86	97	131	47	102	54	72	55				827	366	280	181		+ 9
Deliberate Fires	1063	165	69	72	97	31	75	35	42	39				625	306	203	116		+ 15
Accidental Fires	282	18	17	25	34	16	27	19	30	16				202	60	77	65		- 6
Accidental Dwelling Fires	105	3	5	10	13	7	9	11	13	7				78	18	29	31		+ 6
% Dwelling Fires - No Alarm Fitted	43%	100%	25%	50%	50%	25%	40%	45%	21%	67%				44%	52%	41%	41%		+ 9%
Attacks on Fire Crews	3	0	0	0	1	0	0	0	0	0				1	0	1	0		- 1

**Notes**

The number of false alarms attended in Q3 of 2014/15 was 48 (+21.8%) higher than during Q3 of the previous year. This appears to be as a result of crews attending 44 (31.2%) more automatic fire alarms.

The % of dwelling fires attended where no smoke alarm was fitted in RCT during Q3 of 2014/15 is 41% (14 dwelling fires from 34 were without smoke alarms). This is higher than the 32% witnessed during the same period last year (9 dwelling fires from 28).

The total number of Special Service calls has decreased by 37 (-22.2%) compared to the same quarter last year. Road Traffic Collisions decreased by 15 (-19.5%) and the number of other special service calls attended decreased by 22 (-24.4%).



# Torfaen County Borough Council

## Performance Monitoring Report 2014/2015

Incident Categories	2013/2014	Apr	May	Jun	Jul	Aug	Sep	Oct	Nov	Dec	Jan	Feb	Mar	Year Total	Q1	Q2	Q3	Q4	Q3 - 13/14 vs 14/15
<b>Total Incidents</b>	1234	119	110	112	135	97	106	82	96	79				936	341	338	257		- 34
<b>Special Service Calls (SSC)</b>	183	9	33	12	15	19	15	18	17	11				149	54	49	46		+ 2
SSC - Road Traffic Collisions	58	3	9	4	9	9	9	6	8	2				59	16	27	16		+ 3
SSC - Other	125	6	24	8	6	10	6	12	9	9				90	38	22	30		- 1
<b>False Alarms</b>	564	60	51	64	68	54	52	52	54	43				498	175	174	149		+ 7
Malicious False Alarms	24	3	3	2	3	1	2	2	0	1				17	8	6	3		0
Good Intent False Alarms	163	17	19	15	30	13	16	10	17	7				144	51	59	34		0
Automatic Fire Alarms	377	40	29	47	35	40	34	40	37	35				337	116	109	112		+ 7
<b>Fires</b>	487	50	26	36	52	24	39	12	25	25				289	112	115	62		- 43
Deliberate Fires	356	40	21	30	35	15	25	7	14	14				201	91	75	35		- 47
Accidental Fires	131	10	5	6	17	9	14	5	11	11				88	21	40	27		+ 4
Accidental Dwelling Fires	42	5	0	3	6	3	7	4	4	5				37	8	16	13		+ 7
% Dwelling Fires - No Alarm Fitted	37%	33%	0%	100%	100%	75%	14%	20%	25%	33%				47%	60%	59%	28%		- 27%
Attacks on Fire Crews	1	0	0	0	0	0	0	0	1	0				1	0	0	1		+ 1

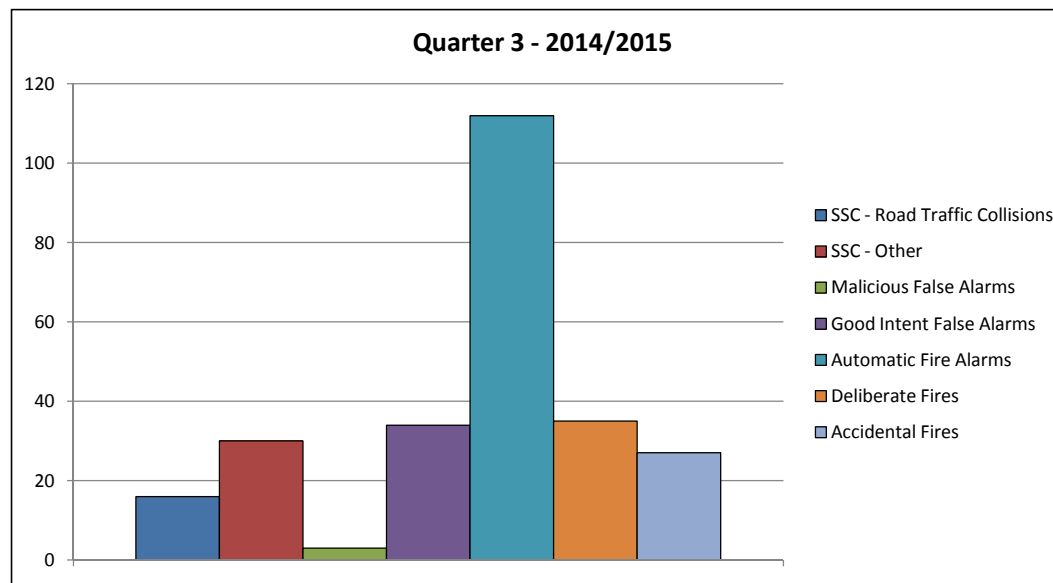
**Notes**

The total number of incidents attended during Q3 of 2014/15 is 15 (-11.7%) lower than that attended during Q3 of 2013/14.

The number of fires attended in Q3 of 2014/15 was 43 (-41.0%) lower than during Q3 of the previous year, which appears to be as a result of 47 (-57.3 %) less deliberate fires. Accidental fires on the other hand increased by 4 (+17.4%).

The number of Accidental Dwelling Fires in Torfaen during Q3 has increased by 7 (+116.7%) compared to the same quarter last year.

The % of dwelling fires attended where no smoke alarm was fitted has fallen from 54.5% for Q3 last year (6 dwelling fires from 11) to 28% during Q3 of this year (5 dwelling fires from 18).



The Vale of Glamorgan County Borough Council

Performance Monitoring Report 2014/2015

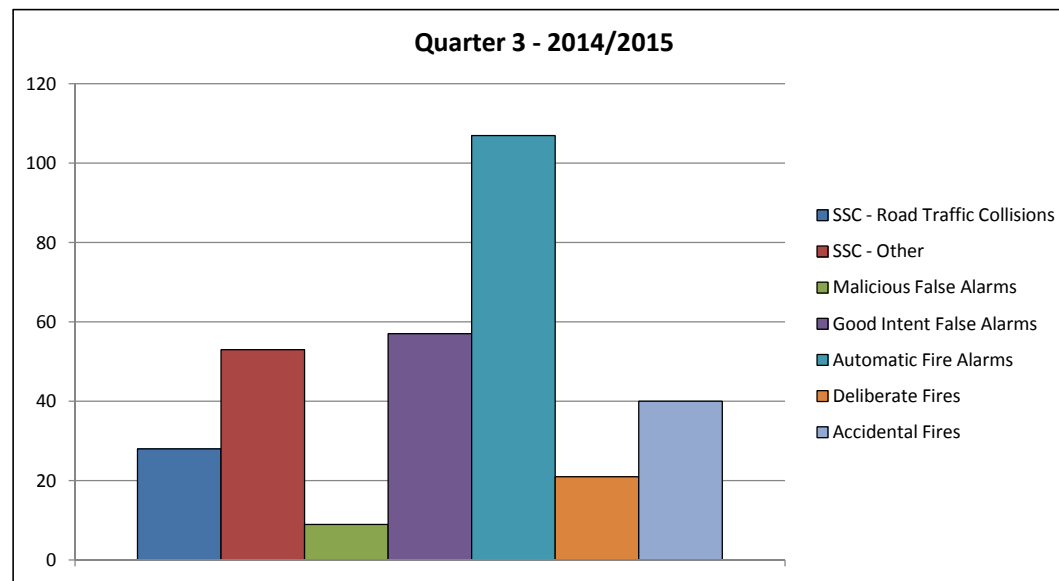
Incident Categories	2013/2014	Apr	May	Jun	Jul	Aug	Sep	Oct	Nov	Dec	Jan	Feb	Mar	Year Total	Q1	Q2	Q3	Q4	Q3 - 13/14 vs 14/15
<b>Total Incidents</b>	1279	105	98	108	98	107	116	110	101	104				947	311	321	315		- 6
<b>Special Service Calls (SSC)</b>	323	36	26	23	25	36	25	23	30	28				252	85	86	81		- 2
SSC - Road Traffic Collisions	136	15	6	10	13	16	8	8	8	12				96	31	37	28		- 5
SSC - Other	187	21	20	13	12	20	17	15	22	16				156	54	49	53		+ 3
<b>False Alarms</b>	604	41	48	53	39	52	57	62	52	59				463	142	148	173		+ 14
Malicious False Alarms	24	2	4	4	1	4	1	4	3	2				25	10	6	9		+ 3
Good Intent False Alarms	184	20	13	21	20	10	15	22	20	15				156	54	45	57		+ 15
Automatic Fire Alarms	396	19	31	28	18	38	41	36	29	42				282	78	97	107		- 4
<b>Fires</b>	352	28	24	32	34	19	34	25	19	17				232	84	87	61		- 18
Deliberate Fires	175	16	12	19	20	9	21	10	8	3				118	47	50	21		- 9
Accidental Fires	177	12	12	13	14	10	13	15	11	14				114	37	37	40		- 9
Accidental Dwelling Fires	63	6	3	3	4	4	5	9	5	5				44	12	13	19		- 4
% Dwelling Fires - No Alarm Fitted	47%	25%	67%	40%	40%	50%	83%	50%	60%	0%				45%	38%	60%	40%		- 2%
Attacks on Fire Crews	1	0	1	0	0	1	0	0	0	0				2	1	1	0		0

**Notes**

The number of false alarms attended in Q3 of 2014/15 was 14 (+8.8%) higher than during Q3 of the previous year, which appears to be as a result of 15 (+35.7 %) more Good Intent False Alarms. There were no specific areas of concern for these incidents as they were spread across many suspected incident types.

The number of fires attended during Q3 this year is 18 (-2.8%) lower than that attended during Q3 of the previous year. This is due to a reduction of 9 (-30%) in the number of deliberate fires and a reduction of 9 (-18.4%) in the number of accidental fires compared to the corresponding quarter of last year.

The number of Accidental Dwelling Fires attended during Q3 has decreased by 4 (-17.4%) compared to the same quarter last year.

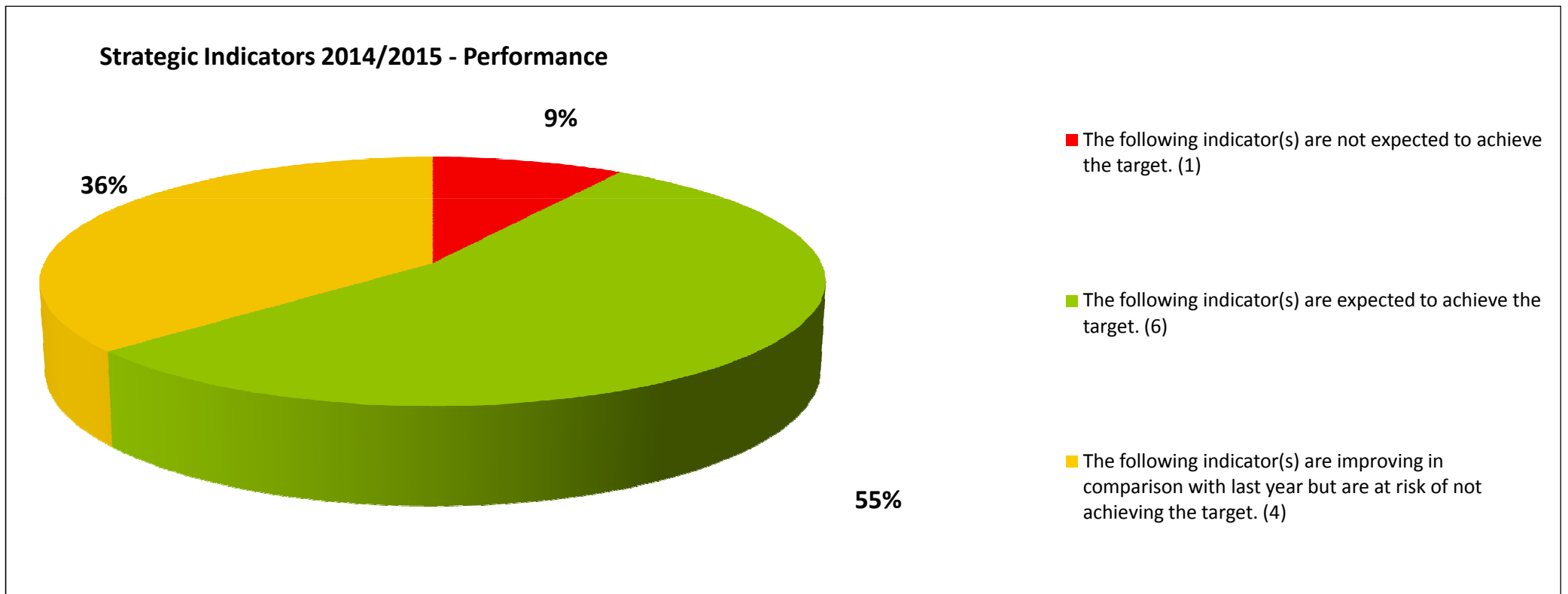


## Performance Indicators

Appendix 1 outlines our performance for the Indicators of particular interest; the graphs show the 5 year trends.

Appendix 2 outlines our performance for the strategic indicators; the graphs show the 5 year trend and the Q3 performance for 2014/15. Where appropriate a Family Group 4 (FG4) average has been included for comparison purposes. FG4 is a group of similar Fire and Rescue Services that bench mark performance.

This graph illustrates our predicted performance for 2014/2015 against our National Indicators. This represents the total number of Strategic Indicators and whether or not we are predicting to achieve our target for 2014/2015. It can be noted that:



## Strategic Indicator Summary

### Key

The following indicator(s) are not expected to achieve the target.

The following indicator(s) are expected to achieve the target.

The following indicator(s) are improving in comparison with last year but are at risk of not achieving the target.

Type	Indicator Ref	Description
FRS/RRC/S/001 (i)	Fire Measures	All Fires Attended per 10,000 population
FRS/RRC/S/001 (ii)	Fire Measures	All Primary Fires Attended per 10,000 population
FRS/RRC/S/001 (iii)	Fire Measures	All Accidental Fires in Dwellings per 10,000 dwellings
FRS/RRC/S/001 (iv)	Fire Measures	All Deliberate Fires Attended per 10,000 population
FRS/RRC/S/002 (i)	Deaths and Injuries	The No of Fire Deaths per 100,000 population
FRS/RRC/S/002 (ii)	Deaths and Injuries	The No of Accidental Fire Deaths per 100,000 population
FRS/RRC/S/002 (iii)	Deaths and Injuries	The No of Deliberate Fire Deaths per 100,000 population
FRS/RRC/S/002 (iv)	Deaths and Injuries	The No of Fire Injuries per 100,000 population
FRS/RRC/S/002 (v)	Deaths and Injuries	The No of Accidental Fire injuries excluding precautionary checks and First Aid per 100,000 population
FRS/RRC/S/002 (vi)	Deaths and Injuries	The No of Deliberate Fire Injuries excluding precautionary checks and First Aid per 100,000 population
FRS/RRC/S/003	Fire Measures	The No of Fires in Non-domestic premises per 1,000 non domestic properties

Please note: The Director for Service Delivery is responsible for all Strategic Indicators.



# Indicators of Particular Interest

**Worthy of note:**

There are three indicators in addition to the Strategic Indicators that are included in this report as they are of particular interest to the service. These being:

- Attacks on Crews at incidents
- RTCs Attended
- The Percentage of Dwelling Fires where no Smoke Alarms fitted

**Attacks on Crews at incidents**

In this period there have been four attacks on crews at operational incidents, all of which involved crews being verbally abused. There were five incidents during the same period of 2013, where crews were verbally abused on one occasion, objects were thrown at fire fighters and fire appliances at three of the incidents while crews experienced another act of aggression at the other. The Service, in partnership with the Police, will look to prosecute more individuals who behave aggressively at operational incidents with the aid of body worn cameras and vehicle cameras. Police made 22 arrests at operational incidents during Q3 of 2014/15.

**Attacks On Crew - October to December 2014**

Date of Incident	UAA	Type of Attack	Injury to fire fighter
25th October 2014	Cardiff	Verbal Abuse	No
05th November 2014	Torfaen	Verbal Abuse	No
20th November 2014	Cardiff	Verbal Abuse	No
27th December 2014	Cardiff	Verbal Abuse	No

In addition to collecting the number of attacks on fire crews at operational incidents, the Fire Crime Unit and Fire Control now record all instances where Community Safety Personnel or Firefighters are attacked by members of the public. There was one attack of this nature in Q3 of 2014/15 which can be seen below.

Date of Incident	UAA	Type of Attack	Role of person(s) attacked
07th October 2014	Newport	Harassment	Fire Fighter

## **RTC's Attended**

The number of Road Traffic Collisions (RTCs) attended during quarter 3 has decreased by 8 (-2.3%) compared to the same quarter last year but has increased by 29 (+9.3%) when compared to the previous quarter. The Authorities experiencing the greatest increase in RTCs compared to the same quarter last year were Blaenau Gwent with an increase of 3 incidents (+30.0%) and Newport who experienced an increase of 8 incidents (+28.6%). The Unitary Authorities experiencing the greatest decrease in the number of RTCs were Monmouthshire with a decrease of 13 incidents (-34.2%) and RCT with a decrease of 15 incidents (-19.5%).

The number of Road Traffic Collisions attended where people were extricated during 2014/15 to date has decreased from 186 to 154 (-17.2%) when compared to the same period last year.

## **The Percentage of dwelling fires where No Smoke Alarm Fitted:**

The percentage of dwelling fires where no smoke alarm was fitted during quarter 3 of 2014/15 has decreased by 2.3% compared to the same quarter last year and has decreased by 5.2% since the last quarter. The trend line illustrates a significant decrease in the percentage of dwelling fires where no smoke alarm was fitted.

The Unitary Authorities with the highest percentage of dwelling fires in which there was no smoke alarm fitted during this quarter were Blaenau Gwent (2 dwelling fires from 4, 50%) and Newport (7 dwelling fires from 16, 43.8%). The Unitary Authorities with the lowest percentage of dwelling fires in which there was no smoke alarm fitted during this quarter were Bridgend (3 from 14, 21.4%) and Monmouthshire (2 from 8, 25.0%).

## Indicators of Particular Interest

Indicator Reference	Description	Good	Performance	Comments	In year actuals														
CD 07	Attacks on Crew	↓	<table border="1"> <caption>Attacks on Crew Performance Data</caption> <thead> <tr> <th>Year</th> <th>Attacks</th> </tr> </thead> <tbody> <tr> <td>2009/10</td> <td>40</td> </tr> <tr> <td>2010/11</td> <td>35</td> </tr> <tr> <td>2011/12</td> <td>26</td> </tr> <tr> <td>2012/13</td> <td>12</td> </tr> <tr> <td>2013/14</td> <td>16</td> </tr> <tr> <td>2014/15</td> <td>14</td> </tr> </tbody> </table>	Year	Attacks	2009/10	40	2010/11	35	2011/12	26	2012/13	12	2013/14	16	2014/15	14	Incidents in Q3= 4  In this period there have been four attacks on crews at operational incidents, all of which involved crews being verbally abused. There were four incidents during the same period of 2013, where crews were verbally abused on one occasion, objects were thrown at fire fighters and fire appliances at three of the incidents while crews experienced another act of aggression at the other.	14
Year	Attacks																		
2009/10	40																		
2010/11	35																		
2011/12	26																		
2012/13	12																		
2013/14	16																		
2014/15	14																		
SPI 10(i)	RTC's Attended	↓	<table border="1"> <caption>RTC's Attended Performance Data</caption> <thead> <tr> <th>Year</th> <th>RTC's Attended</th> </tr> </thead> <tbody> <tr> <td>2009/10</td> <td>1450</td> </tr> <tr> <td>2010/11</td> <td>1050</td> </tr> <tr> <td>2011/12</td> <td>1050</td> </tr> <tr> <td>2012/13</td> <td>1150</td> </tr> <tr> <td>2013/14</td> <td>1350</td> </tr> <tr> <td>2014/15</td> <td>950</td> </tr> </tbody> </table>	Year	RTC's Attended	2009/10	1450	2010/11	1050	2011/12	1050	2012/13	1150	2013/14	1350	2014/15	950	Incidents in Q3= 344  The number of Road Traffic Collisions (RTCs) attended during quarter 2 has decreased by 8 (-2.3%) compared to the same quarter last year but has increased by 29 (+9.3%) when compared to the previous quarter. The Authorities experiencing the greatest increase in RTCs compared to the same quarter last year were Blaenau Gwent with an increase of 3 incidents (+30.0%) and Newport who experienced an increase of 8 incidents (+28.6%).	962
Year	RTC's Attended																		
2009/10	1450																		
2010/11	1050																		
2011/12	1050																		
2012/13	1150																		
2013/14	1350																		
2014/15	950																		
FRS/RRC/C/005 (iii)	% of dwelling fires where No Smoke Alarm Fitted	↓	<table border="1"> <caption>% of dwelling fires where No Smoke Alarm Fitted Performance Data</caption> <thead> <tr> <th>Year</th> <th>Percentage</th> </tr> </thead> <tbody> <tr> <td>2009/10</td> <td>53%</td> </tr> <tr> <td>2010/11</td> <td>47%</td> </tr> <tr> <td>2011/12</td> <td>42%</td> </tr> <tr> <td>2012/13</td> <td>39%</td> </tr> <tr> <td>2013/14</td> <td>36%</td> </tr> <tr> <td>2014/15</td> <td>40%</td> </tr> </tbody> </table>	Year	Percentage	2009/10	53%	2010/11	47%	2011/12	42%	2012/13	39%	2013/14	36%	2014/15	40%	Incidents in Q3= 36.4%  The percentage of dwelling fires where no smoke alarm was fitted during quarter 3 of 2014/15 has decreased by 2.3% compared to the same quarter last year and has decreased by 5.2% since the last quarter. The trend line illustrates a significant decrease in the percentage of dwelling fires where no smoke alarm was fitted. Having said this, the total percentage of dwelling fires attended where no smoke alarm was fitted figure this year to date (40.14%) is above the figure seen at the end of last year (36.40%).	40.1%
Year	Percentage																		
2009/10	53%																		
2010/11	47%																		
2011/12	42%																		
2012/13	39%																		
2013/14	36%																		
2014/15	40%																		

## Fire Measures

### Worthy of note:

Three strategic indicators covering fire measures are expected to exceed their annual target based on the figures seen in quarter 3 of this year, although they are expected to perform better than they did last year. These indicators were;

1. Total number of fires attended,
2. The total number of deliberate fires attended and
3. The number of fires attended in non residential buildings.

The total number of fires attended during quarter 3 of 2014/15 is 51 (-4.58%) lower than the number seen during quarter 3 of last year, while the number of deliberate fires attended by the Service during quarter 3 of 2014/15 is 44 (-6.36%) lower than the number seen during quarter 3 of last year.

Deliberate fires have been recognised in UAA Single Integrated Plans as antisocial behaviour/crime. The nature of this problem will be explained to our partners.

Two strategic indicators covering fire measures are expected to perform better than their annual target based on the figures seen in quarter 3 of this year. These indicators were

1. Total number of primary fires attended and
2. The total number of fires started accidentally in dwellings.

The total number of accidental dwelling fires during the third quarter of 2014/2015 was 5 (+2.98%) incidents higher than the figure seen during the third quarter of last year. The majority of accidental dwelling fires attended during this quarter originated in the kitchen (123 of 173 incidents, 71.1%), which has been the case during every quarter for the previous three years. The Home Safety team ran an initiative in January and February of this year to highlight the importance of safety in the kitchen.

## Fire Measures

Indicator Reference	Description	Good	Performance	Comments	In year actuals																		
FRS/RRC/S/001 (i)	All Fires Attended per 10,000 population	↓	<table border="1"> <caption>All Fires Attended per 10,000 population</caption> <thead> <tr> <th>Year</th> <th>Value</th> </tr> </thead> <tbody> <tr><td>2009/10</td><td>74</td></tr> <tr><td>2010/11</td><td>84</td></tr> <tr><td>2011/12</td><td>60</td></tr> <tr><td>2012/13</td><td>39</td></tr> <tr><td>2013/14</td><td>46</td></tr> <tr><td>2014/15</td><td>30</td></tr> <tr><td>TARGET</td><td>40</td></tr> </tbody> </table>	Year	Value	2009/10	74	2010/11	84	2011/12	60	2012/13	39	2013/14	46	2014/15	30	TARGET	40	<p>Incidents in Q3= 1062</p> <p>The total number of fires attended during quarter 3 of 2014/15 is 50 (-4.49%) lower than the number seen during quarter 3 of last year. The numbers are higher than last year in October but lower in November and December. The majority of the fires attended involve loose refuse.</p> <p>Based on the number of fires attended during the first three quarters of 2014/15, the predicted total of fires attended this year will be 6,100. This number is 100 (+1.7%) higher than the target number of 6,000 but is less than the 6,838 fires attended last year.</p>	4598		
Year	Value																						
2009/10	74																						
2010/11	84																						
2011/12	60																						
2012/13	39																						
2013/14	46																						
2014/15	30																						
TARGET	40																						
FRS/RRC/S/001 (ii)	All Primary Fires Attended per 10,000 population	↓	<table border="1"> <caption>All Primary Fires Attended per 10,000 population</caption> <thead> <tr> <th>Year</th> <th>Value</th> </tr> </thead> <tbody> <tr><td>2009/10</td><td>23.5</td></tr> <tr><td>2010/11</td><td>22.5</td></tr> <tr><td>2011/12</td><td>18.5</td></tr> <tr><td>2012/13</td><td>15</td></tr> <tr><td>2013/14</td><td>14</td></tr> <tr><td>2014/15</td><td>11</td></tr> <tr><td>TARGET</td><td>14</td></tr> <tr><td>FG4 2013/14 Average</td><td>13</td></tr> </tbody> </table>	Year	Value	2009/10	23.5	2010/11	22.5	2011/12	18.5	2012/13	15	2013/14	14	2014/15	11	TARGET	14	FG4 2013/14 Average	13	<p>Incidents in Q3= 503</p> <p>Cardiff (105) had the highest numbers of Primary fires in Quarter 3, with 41 of these being Dwelling Fires. Merthyr have had 33 Primary fires which included 12 vehicle fires and 10 dwelling fires.</p>	1577
Year	Value																						
2009/10	23.5																						
2010/11	22.5																						
2011/12	18.5																						
2012/13	15																						
2013/14	14																						
2014/15	11																						
TARGET	14																						
FG4 2013/14 Average	13																						

## Fire Measures

Indicator Reference	Description	Good	Performance	Comments	In year actuals																
FRS/RRC/S/001 (iii)	All Accidental Fires in Dwellings per 10,000 dwellings	↓	<table border="1"> <caption>All Accidental Fires in Dwellings per 10,000 dwellings</caption> <thead> <tr> <th>Year</th> <th>Value</th> </tr> </thead> <tbody> <tr><td>2009/10</td><td>13.0</td></tr> <tr><td>2010/11</td><td>12.0</td></tr> <tr><td>2011/12</td><td>11.5</td></tr> <tr><td>2012/13</td><td>11.0</td></tr> <tr><td>2013/14</td><td>10.5</td></tr> <tr><td>2014/15</td><td>10.0</td></tr> <tr><td>FG4 2013/14 Average</td><td>10.5</td></tr> </tbody> </table>	Year	Value	2009/10	13.0	2010/11	12.0	2011/12	11.5	2012/13	11.0	2013/14	10.5	2014/15	10.0	FG4 2013/14 Average	10.5	<p>Incidents in Q3= 173</p> <p>There have been 173 incidents in quarter 3, which is 5 more (+ 2.98%) than last year for the same period. Barry station ground (15) have had the highest numbers during Q3, with a smoke alarm being present and raising the alarm on only 8 occasions. 123 of the 173 (71.1%) incidents started in the kitchen.</p>	498
Year	Value																				
2009/10	13.0																				
2010/11	12.0																				
2011/12	11.5																				
2012/13	11.0																				
2013/14	10.5																				
2014/15	10.0																				
FG4 2013/14 Average	10.5																				
FRS/RRC/S/001 (iv)	All Deliberate Fires Attended per 10,000 population	↓	<table border="1"> <caption>All Deliberate Fires Attended per 10,000 population</caption> <thead> <tr> <th>Year</th> <th>Value</th> </tr> </thead> <tbody> <tr><td>2009/10</td><td>65</td></tr> <tr><td>2010/11</td><td>58</td></tr> <tr><td>2011/12</td><td>48</td></tr> <tr><td>2012/13</td><td>38</td></tr> <tr><td>2013/14</td><td>28</td></tr> <tr><td>2014/15</td><td>20</td></tr> <tr><td>FG4 2013/14 Average</td><td>28</td></tr> </tbody> </table>	Year	Value	2009/10	65	2010/11	58	2011/12	48	2012/13	38	2013/14	28	2014/15	20	FG4 2013/14 Average	28	<p>Incidents in Q3= 648</p> <p>The number of deliberate fires attended has decreased by 44 (-6.36%) compared to the third quarter of 2013/14. Again loose refuse accounts for the majority of the incidents</p> <p>Based on the number of deliberate fires attended during the first three quarters of 2014/15, the predicted number of deliberate fires attended this year will be 4,170. This number is 70 (1.7%) higher than the target number of 4,100 but is less than the 4,978 deliberate fires attended last year.</p>	3260
Year	Value																				
2009/10	65																				
2010/11	58																				
2011/12	48																				
2012/13	38																				
2013/14	28																				
2014/15	20																				
FG4 2013/14 Average	28																				

## Fire Measures

Indicator Reference	Description	Good	Performance	Comments	In year actuals																
FRS/RRC/S/003	The No of Fires in Non-domestic premises per 1,000 non domestic properties	↓	<table border="1"> <caption>Performance Data</caption> <thead> <tr> <th>Year</th> <th>Number of Fires per 1,000</th> </tr> </thead> <tbody> <tr> <td>2009/10</td> <td>13.5</td> </tr> <tr> <td>2010/11</td> <td>11.0</td> </tr> <tr> <td>2011/12</td> <td>8.2</td> </tr> <tr> <td>2012/13</td> <td>7.8</td> </tr> <tr> <td>2013/14</td> <td>6.5</td> </tr> <tr> <td>2014/15</td> <td>5.5</td> </tr> <tr> <td>FG4 2013/14 Average</td> <td>6.9</td> </tr> </tbody> </table>	Year	Number of Fires per 1,000	2009/10	13.5	2010/11	11.0	2011/12	8.2	2012/13	7.8	2013/14	6.5	2014/15	5.5	FG4 2013/14 Average	6.9	<p>Incidents in Q3= 79</p> <p>Numbers have decreased by 3 (-3.66%) since the same quarter last year. Cardiff (22) have had the highest numbers this quarter, 4 of which were in Hospitals and medical care establishments.</p> <p>Based on the number of fires attended during the first three quarters of 2014/15, the predicted number of fires attended in Non Domestic Premises this year will be 310. This number is 20 (+6.9%) higher than the target number of 290 but is less than the number attended last year.</p>	237
Year	Number of Fires per 1,000																				
2009/10	13.5																				
2010/11	11.0																				
2011/12	8.2																				
2012/13	7.8																				
2013/14	6.5																				
2014/15	5.5																				
FG4 2013/14 Average	6.9																				

# Deaths and Injuries

## **Worthy of note:**

Of the six Strategic indicators covering Deaths and Injuries, one is expected to not meet its end of year target while showing a decline in performance compared to last year.

This was:

- The number of deliberate fire injuries excluding precautionary checks and First Aid per 100,000 population.

One indicator is at risk of not meeting its end of year target while showing an improvement in performance compared to last year.

This was:

- The total number of fire injuries excluding precautionary checks and First Aid per 100,000 population.

## **Notable Good practice:**

The four indicators that are expected to achieve their targets were:

- The Number of Fire Deaths per 100,000 population.
- The Number of Accidental Fire Deaths per 100,000 population.
- The Number of Deliberate Fire Deaths per 100,000 population.
- The Number of Accidental fire injuries excluding precautionary checks and First Aid per 100,000 population.


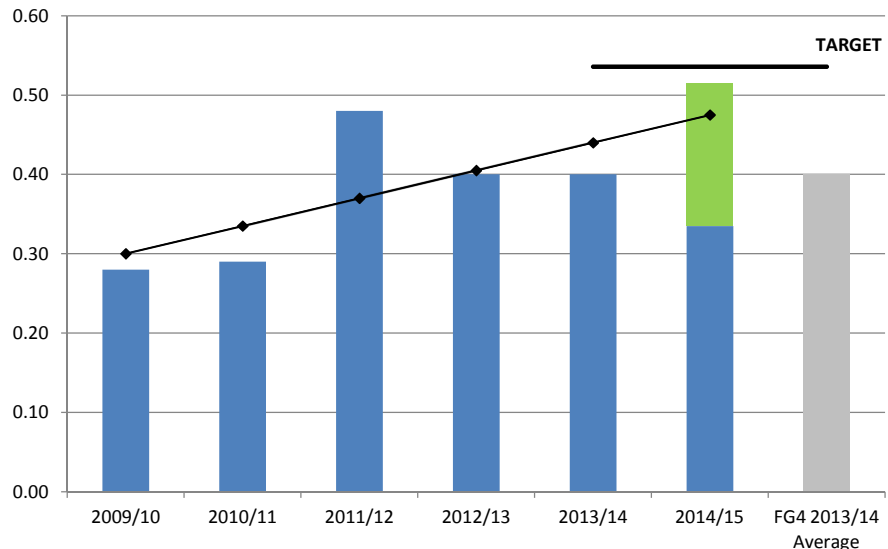

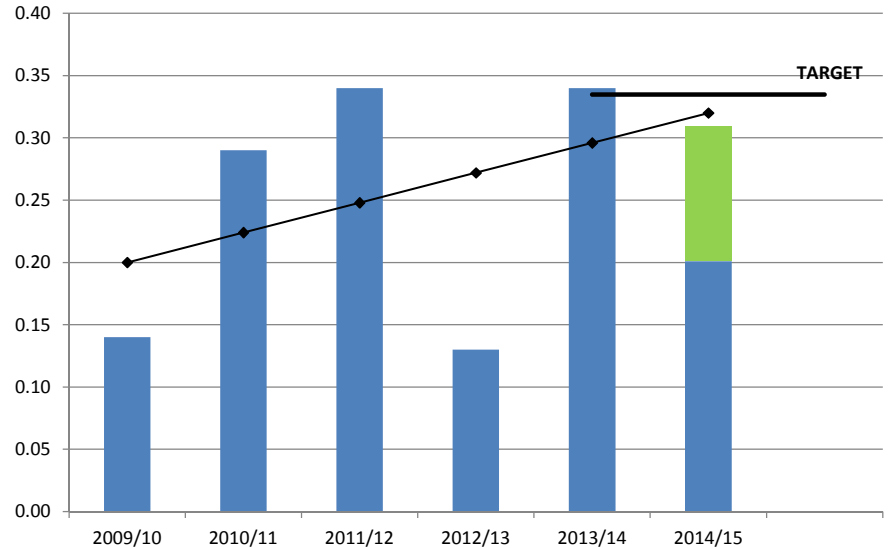
There have been five fire deaths in South Wales during 2014/15 to date, resulting in the predicted total number of fire fatalities for the whole year being 8.

It is worth noting that the number of deliberate fire injuries in South Wales already stands at 8, meaning that it has already hit the target set for year end. As reported in Q2 report this indicator was heavily influenced by a single incident that resulted in 4 injuries in 1 deliberate fire.

In an attempt to ensure that the indicators for total fire injuries and accidental fire injuries do not exceed their annual thresholds, a message encouraging the public to "get out and stay out" of their premises in the event of a fire was incorporated in to the Service's Christmas Safety message after it was identified that almost a quarter of those injured in accidental dwelling fires during the last two and a half years attempted to fight the fire themselves or returned to the fire in an attempt to rescue others or property.



## Deaths and Injuries

Indicator Reference	Description	Good	Performance	Comments	In year actuals																
FRS/RRC/S/002 (i)	The No of Fire Deaths per 100,000 population		 <table border="1" style="display: none;"> <caption>Fire Deaths per 100,000 Population</caption> <thead> <tr><th>Year</th><th>Value</th></tr> </thead> <tbody> <tr><td>2009/10</td><td>0.28</td></tr> <tr><td>2010/11</td><td>0.29</td></tr> <tr><td>2011/12</td><td>0.48</td></tr> <tr><td>2012/13</td><td>0.40</td></tr> <tr><td>2013/14</td><td>0.40</td></tr> <tr><td>2014/15</td><td>0.51</td></tr> <tr><td>FG4 2013/14 Average</td><td>0.40</td></tr> </tbody> </table>	Year	Value	2009/10	0.28	2010/11	0.29	2011/12	0.48	2012/13	0.40	2013/14	0.40	2014/15	0.51	FG4 2013/14 Average	0.40	<p>Incidents in Q3= 0</p> <p>There were no fire deaths in South Wales during the third quarter of 2014/15. The threshold set at the beginning of the year for fire related deaths is 8.</p>	5
Year	Value																				
2009/10	0.28																				
2010/11	0.29																				
2011/12	0.48																				
2012/13	0.40																				
2013/14	0.40																				
2014/15	0.51																				
FG4 2013/14 Average	0.40																				
FRS/RRC/S/002 (ii)	The No of Accidental Fire Deaths per 100,000 population		 <table border="1" style="display: none;"> <caption>Accidental Fire Deaths per 100,000 Population</caption> <thead> <tr><th>Year</th><th>Value</th></tr> </thead> <tbody> <tr><td>2009/10</td><td>0.14</td></tr> <tr><td>2010/11</td><td>0.29</td></tr> <tr><td>2011/12</td><td>0.34</td></tr> <tr><td>2012/13</td><td>0.13</td></tr> <tr><td>2013/14</td><td>0.34</td></tr> <tr><td>2014/15</td><td>0.31</td></tr> </tbody> </table>	Year	Value	2009/10	0.14	2010/11	0.29	2011/12	0.34	2012/13	0.13	2013/14	0.34	2014/15	0.31	<p>Incidents in Q3= 0</p> <p>Incident 1 - Penarth. A male aged 90 accidentally set himself alight in an area next to houses using smoking materials. The final cause of death is awaited from the Coroners Office.</p> <p>Incident 2 - Pontllanfraith. Female aged 99 suffered smoke inhalation/asphyxiation in a fire caused by a faulty extension lead</p> <p>Incident 3 - Ebbw Vale. Male aged 17 suffered smoke inhalation/asphyxiation in a dwelling fire caused by cooking materials.</p>	3		
Year	Value																				
2009/10	0.14																				
2010/11	0.29																				
2011/12	0.34																				
2012/13	0.13																				
2013/14	0.34																				
2014/15	0.31																				

## Deaths and Injuries

Indicator Reference	Description	Good	Performance	Comments	In year actuals
FRS/RRC/S/002 (iii)	The No of Deliberate Fire Deaths per 100,000 population			<p>Incidents in Q3= 0</p> <p>Incident 1 - Ynysybwl, Pontypridd. A male aged 46 died in a deliberate dwelling fire.</p> <p>Incident 2 - Tredegar. A female aged 47 committed suicide in a car using matches to ignite the fire.</p>	2
FRS/RRC/S/002 (iv)	The No of Fire Injuries per 100,000 population			<p>Incidents in Q3= 11</p> <p>There have been 11 injuries this quarter compared to 15 in 2013/14. There was 1 serious injury (overcome by gas, smoke or toxic fumes) and 10 slight injuries (3 overcome by gas, 4 had slight burns and 3 had breathing difficulties).</p> <p>Based on the figures seen thus far in 2014/15, the predicted number of injuries for the year is 61. This means that the prediction slightly exceeds the threshold number for fire injuries set at the start of the year (which was 60) but will perform better than last year (where the total number of injuries was 62).</p> <p>However, the target can still be achieved with lower number in Q4.</p>	41

## Deaths and Injuries

Indicator Reference	Description	Good	Performance	Comments	In year actuals																					
FRS/RRC/S/002 (v)	The No of Accidental Fire injuries excluding precautionary checks per 100,000 population		<table border="1" style="display: none;"> <caption>Performance Data for Accidental Fire Injuries</caption> <thead> <tr><th>Year</th><th>Actual</th><th>Target</th></tr> </thead> <tbody> <tr><td>2009/10</td><td>4.3</td><td>5.4</td></tr> <tr><td>2010/11</td><td>7.0</td><td>5.0</td></tr> <tr><td>2011/12</td><td>4.0</td><td>4.6</td></tr> <tr><td>2012/13</td><td>4.3</td><td>4.2</td></tr> <tr><td>2013/14</td><td>3.5</td><td>3.8</td></tr> <tr><td>2014/15</td><td>3.3</td><td>3.5</td></tr> </tbody> </table>	Year	Actual	Target	2009/10	4.3	5.4	2010/11	7.0	5.0	2011/12	4.0	4.6	2012/13	4.3	4.2	2013/14	3.5	3.8	2014/15	3.3	3.5	<p>Incidents in Q3= 10</p> <p>There were 10 accidental fire injuries this quarter compared to 10 last year. Four of the injuries seen during Q3 of this year involved casualties that were under the influence of alcohol and/or drugs while three of the injuries were as a result of people attempting to fight the fire.</p>	33
Year	Actual	Target																								
2009/10	4.3	5.4																								
2010/11	7.0	5.0																								
2011/12	4.0	4.6																								
2012/13	4.3	4.2																								
2013/14	3.5	3.8																								
2014/15	3.3	3.5																								
FRS/RRC/S/002 (vi)	The No of Deliberate Fire Injuries excluding precautionary checks per 100,000 population		<table border="1" style="display: none;"> <caption>Performance Data for Deliberate Fire Injuries</caption> <thead> <tr><th>Year</th><th>Actual</th><th>Target</th></tr> </thead> <tbody> <tr><td>2009/10</td><td>1.75</td><td>1.65</td></tr> <tr><td>2010/11</td><td>1.1</td><td>1.35</td></tr> <tr><td>2011/12</td><td>1.3</td><td>1.05</td></tr> <tr><td>2012/13</td><td>0.55</td><td>0.78</td></tr> <tr><td>2013/14</td><td>0.6</td><td>0.5</td></tr> <tr><td>2014/15</td><td>0.7</td><td>0.5</td></tr> </tbody> </table>	Year	Actual	Target	2009/10	1.75	1.65	2010/11	1.1	1.35	2011/12	1.3	1.05	2012/13	0.55	0.78	2013/14	0.6	0.5	2014/15	0.7	0.5	<p>Incidents in Q3= 1</p> <p>The deliberate fire injury sustained during Q3 was as a result of a suicide attempt. It is worth noting that the number of deliberate fire injuries in South Wales already stands at 8, meaning that it has already hit the target set for year end. This has been heavily influenced by the fact that four members of the same family sustained their injuries at one deliberate fire during the second quarter of the year.</p>	8
Year	Actual	Target																								
2009/10	1.75	1.65																								
2010/11	1.1	1.35																								
2011/12	1.3	1.05																								
2012/13	0.55	0.78																								
2013/14	0.6	0.5																								
2014/15	0.7	0.5																								